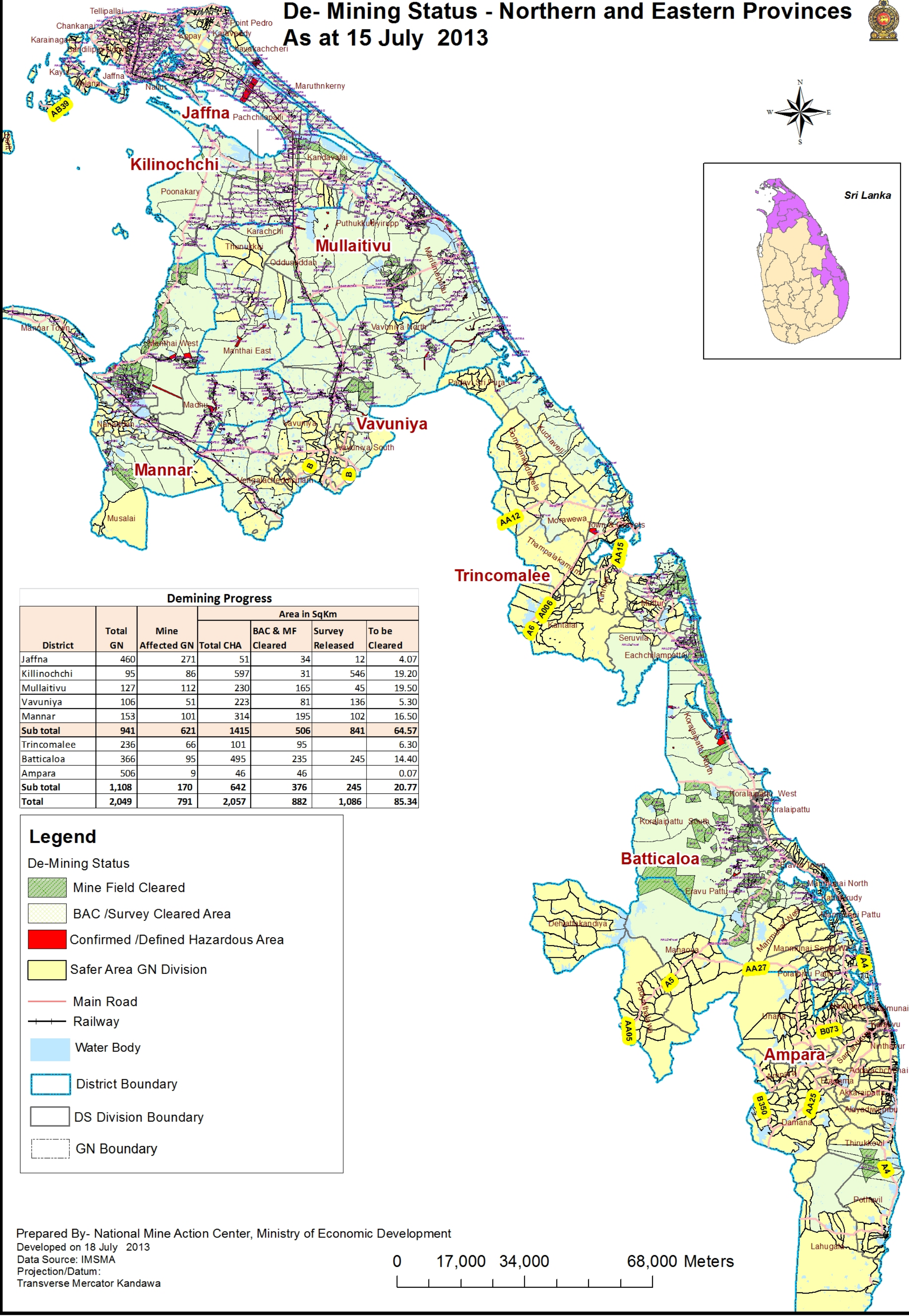
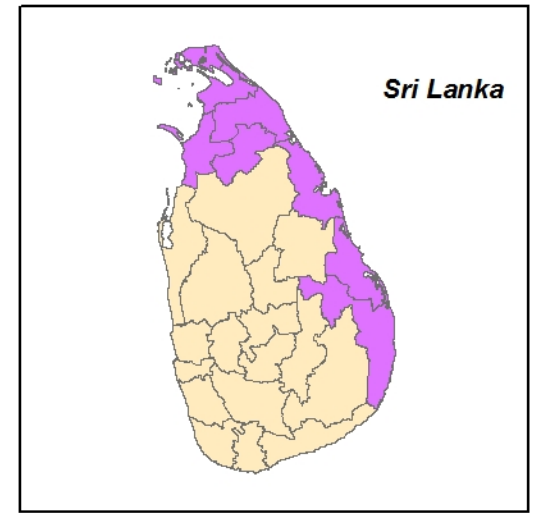
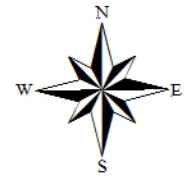


# De-Mining Status - Northern and Eastern Provinces As at 15 July 2013



**Demining Progress**

District	Total GN	Mine Affected GN	Area in SqKm			
			Total CHA	BAC & MF Cleared	Survey Released	To be Cleared
Jaffna	460	271	51	34	12	4.07
Kilinochchi	95	86	597	31	546	19.20
Mullaitivu	127	112	230	165	45	19.50
Vavuniya	106	51	223	81	136	5.30
Mannar	153	101	314	195	102	16.50
<b>Sub total</b>	<b>941</b>	<b>621</b>	<b>1415</b>	<b>506</b>	<b>841</b>	<b>64.57</b>
Trincomalee	236	66	101	95		6.30
Batticaloa	366	95	495	235	245	14.40
Ampara	506	9	46	46		0.07
<b>Sub total</b>	<b>1,108</b>	<b>170</b>	<b>642</b>	<b>376</b>	<b>245</b>	<b>20.77</b>
<b>Total</b>	<b>2,049</b>	<b>791</b>	<b>2,057</b>	<b>882</b>	<b>1,086</b>	<b>85.34</b>

## Legend

### De-Mining Status

- Mine Field Cleared
- BAC /Survey Cleared Area
- Confirmed /Defined Hazardous Area
- Safer Area GN Division
- Main Road
- Railway
- Water Body
- District Boundary
- DS Division Boundary
- GN Boundary

Prepared By- National Mine Action Center, Ministry of Economic Development  
 Developed on 18 July 2013  
 Data Source: IMSMA  
 Projection/Datum:  
 Transverse Mercator Kandawa

